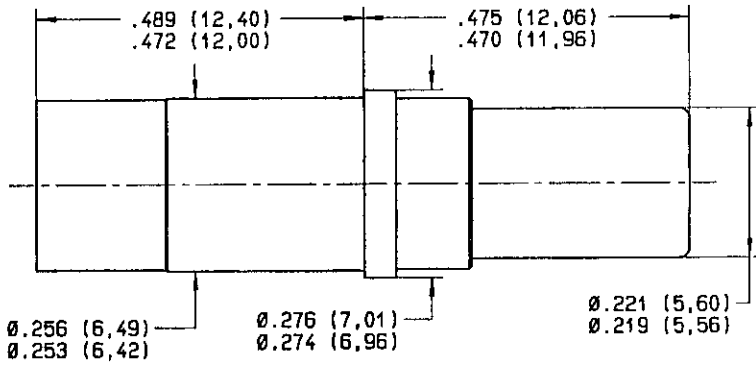


Series  
EPX

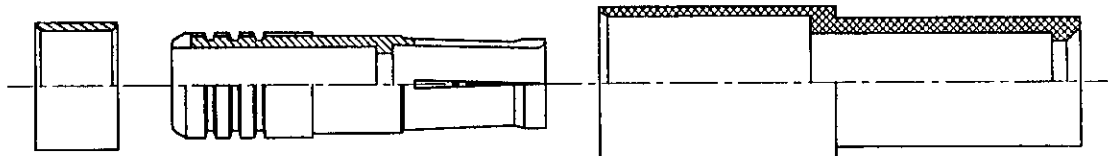
CONCENTRIC TWINAX  
PIN CONTACT  
Twinax PAN 6421 and M17176/00002 cables.

Issue:  
Jan 27, 99

Page  
1 / 1



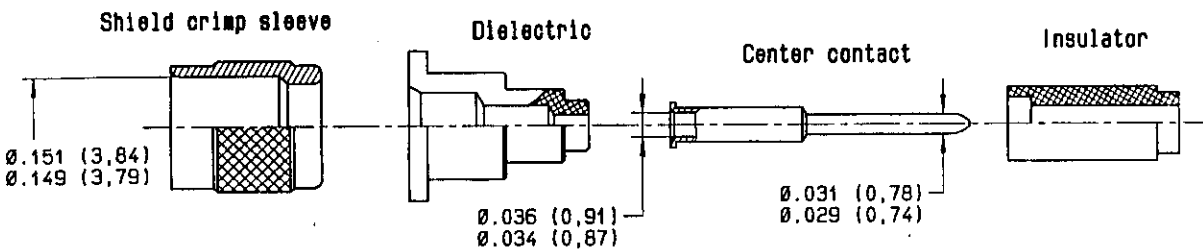
Contact outer body



Ferrule

Intermediate contact

Insulator



**Material:**

- Outer body contact and intermediate contact: beryllium copper 1/2 hardness  
in knoop 140 max (126 HV) for crimp barrel.
- Ferrule and shield crimp sleeve: copper alloy.
- Center contact: C97.
- Dielectric and insulators: PTFE.

**Finish:**

- All metallic parts: gold per MIL-G-45204 type I or II grade C or D class 1, 50 microinches over nickel plate per QQ-N-290.

Crimping tools: (crimped contacts will show no crack when inspected, per MIL-C-22520, at 10x)

- Center contact:
  - . Basic tool: M22520/2.01 (RADIALL: 282 281).
  - . Selector set 3.
  - . Positionner RADIALL: 282 560.
- Intermediate and outer body contacts:
  - . Basic tool: M22520/5.01 (RADIALL 282 293).
  - . Die: M22520/5.05 (RADIALL 282 246).
  - . Die closure: B for intermediate contact.  
A for outer body contact.

Extraction tool: M81969/28.01 (RADIALL 282 946).

See wiring specification: RP 2737.

This information is given as an indication. In the continual goal to improve our products, we reserve the right to make any modifications judged necessary.

CREATION				
PEN:				
NOM: JP.MACARI				
DATE: Oct 23, 84	01.27.99	Redraw/Updated from the detail drawings; Added standards and M17176/00002 cable.	L.Garcia	L.Gier
APPR.:	Issue	Revisions	Name	Approved